

SwimCross® Exercise Systems | X500



From the makers of



Wellness that fits your life.

Nothing is more refreshing or rejuvenating than a swim or an aquatic workout in the privacy and convenience of your own home. Endless Pools®, the makers of SwimCross® Exercise Systems, introduces the X500. Not only visually stunning, the X500 was purposely designed for any level of user to attain a complete body workout. With its generous swim and exercise area, along with easy entry and variable speed swim jet system, the X500 takes backyard fitness to a whole new level. It's time to put wellness into your daily routine.

X500

SwimCross® Exercise Systems



Dimensions (L x W x H)	457 x 226 x 127 cm
Water Capacity	6,250 litres
Weight	1,230 kg (Dry) / 8,280 kg (Filled*)
Shell Colour Options	Alpine White or Ice Grey
Cabinet Colour Options	Mocha or Grey
Swim Technology	3 round Swim Jets, 1 River Jet
Swim Jet Pumps	2.5 HP Continuous Duty; 5.2 HP Breakdown Torque – 1 Single Speed & 1 Dual Speed
Hydromassage Seats	3
Hydromassage Jets - 27	1 Large Jet, 2 Rotary Jets, 2 Directional Jets, 22 Mini Jets
Hydromassage Jet Pump	2.5 HP Continuous Duty; 5.2 HP Breakdown Torque – Dual Speed Pump
Control System**	LCD Control Panel; 230V, 32A, 50Hz
Water Feature	2 Illuminated Waterfalls
Water Management System	UVC + CD Ozone
Effective Filtration Area	18m ²
Lighting System	Multi-Colour 16 LED Lights, Exterior LED Lighting (optional)
Substructure	2 mm Galvanised Steel Frame
Base Pan	Thermoformed ABS Base Pan
Heater	3000 watt
Energy Efficiency	Certified to the APSP 14 National Standard and the California Energy Commission (CEC) in accordance with California Law
Stainless Steel Grab Rails	3 Stainless Steel Rails
Music Option	8 Speakers + Subwoofer, Bluetooth® Enabled
Exercise Equipment Options	Swim Tether, Rowing Kit, Resistance Bands, Floor Mirror, Aqua Bike
Vinyl Cover & Lifter Options	Watkins Bi-Fold Covers & Lifters (UpRite™/Pro Lift™ IV), Easy Slider Cover Mounts or VacuSeal™ Cover System, CoverCradle™/Pro Lift™ III Lifter System
Additional Options	CoolZone™ Cooling System, SwimDek® Surface Kits, Signature Steps

Shell Colours



Ice Grey

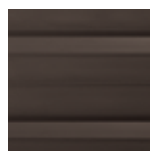


Alpine White

Cabinet Colours



Grey



Mocha

*Includes water and 10 adults weighing 80 kg each
**Other electrical configurations possible

All rights reserved. Specifications, colours, and surface materials subject to change without notice

