

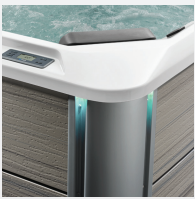
## HOT SPOT® COLLECTION



Frog® In-Line  
Cartridge Ready



FiberCor®  
High-Density Insulation



Exterior Lighting

# RHYTHM®



*Shown with Alpine White Shell  
and Almond Cabinet.*

People	Seating	Jets	Voltage
7 Seats	Open	40 Jets	230 V

**Size**  
213 cm x 213 cm x 92 cm

**Water Care**  
FROG® In-Line Cartridge Ready



Hot Spring Spas New Zealand Ltd  
Phone: 09 415 3230 | Email: info@hotspring.co.nz

# HOT SPOT® COLLECTION

# RHYTHM®



## SHELL COLORS\*



## CABINET COLORS\*



## COVER COLORS

POLYESTER



## LEGENDARY MASSAGE

### 40 Personalized-Control Jets

- 3 XL Directional Hydromassage jets
- 2 XL Rotary Hydromassage jets
- 3 Directional Hydromassage jets
- 2 Rotary Hydromassage jets
- 30 Directional Precision® jets

## EASY WATER CARE

**Water Care System** FROG® In-Line Cartridge Ready

**Filtration System** (1) Polyester 6m<sup>2</sup> filter, top loading

## LEADING ENERGY EFFICIENCY

**Jet Pump 1** Wavemaster® 8200; Two-speed, 2.0 HP Continuous Duty, 4.0 HP Breakdown Torque

**Jet Pump 2** Wavemaster® 8000; One-speed, 2.0 HP Continuous Duty, 4.0 HP Breakdown Torque

**Heater** No-Fault® 2,000 W / 230 V

**Cover** WeatherPro(TM) 4" Tapered Custom-Fit with Hinge Seal

## SIZE

**Dimensions** 213 cm x 213 cm x 92 cm

## CAPACITY

**Seating Capacity** 7 seats

**Water Capacity** 1,250 liters

**Weight** 383 kg dry / 2,185 kg filled\*\*

## ADDITIONAL FEATURES

**Smart Spa Technology** Hot Spring Spas App, Powered by the Connected Spa Kit

**Water Feature** Included

**Cover Lifters** CoverCradle®, CoverCradle II, Lift 'n Glide®, or UpRite®

**Steps** Hot Spot Collection Step (Almond, Havana, and Storm), Polymer Step (Ash)

**Entertainment** Wireless Sound System

**Control System** IQ 2020® with LCD control panel  
230 V / 15 amp, 50 Hz  
(Includes G.F.C.I. protected sub-panel)

**Lighting System** Interior: 10 multi-color LED points of light  
Exterior: 4 multi-color LED points of light

\*Actual colors and products may vary from print representation. See dealer to verify.  
\*\*Includes water and 7 adults weighing 80kg each.